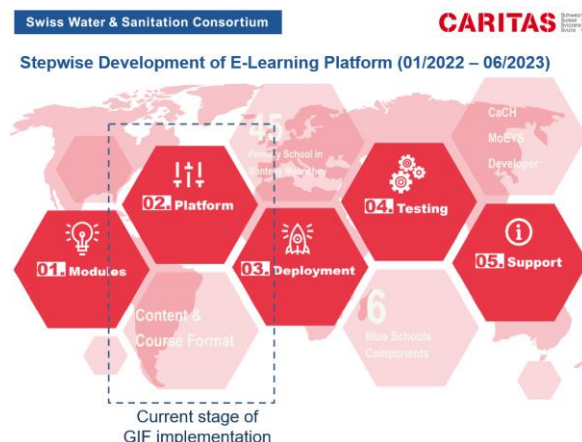


Update on Global Innovation Fund (GIF)

Projects of Caritas Switzerland in Cambodia, Tdh Nepal and Tdh Mali

CAMBODIA: Developing an e-learning Platform and content for the Blue Schools Kit

E-learning has become an **alternative way of teaching** – even in Cambodia during Covid-19. To reach more schools and cost-effectively **scale out the Blue Schools approach**, this GIF project was approved by SWSC in 2021 and initiated in 2022 in coordination with the Ministry of Education. The platform is under development and will be designed to **support teachers** in delivering the Blue Schools Toolkit already contextualized for Cambodia.



SWSC arranged a technical backstopping consultancy for Eawag-sandec's Digital Learning Manager, Fabian Suter, to support CaCH Cambodia in the selection of a suitable e-learning service provider. He reviewed the draft Terms of Reference (ToR) for designing an interactive platform with suitable, attractive content. The platform will be compatible with the Ministry of Education's e-learning portal. Key features of the innovation include

- Interfaced Blue Schools e-learning website and a mobile app,
- E-learning content with video tutorials by topic for teachers to prepare and conduct practical exercises,
- Graphic content to adapt the Blue Schools Kit for e-learning applications,
- Additional animated / interactive graphics, cartoons, drawings, picture compilations, diagrams and narrative texts that are context suitable and formatted for App / web-page layout.

The procurement process was advertised and service provider selection is slated for August 2022. Although the platform will be in Khmer, the platform architecture as well as the ToR and original source files will be available for use by SWSC members at the end of Phase 3.



NEPAL: Characterization and Quantification of Healthcare Waste in limited resource settings

Realizing the need for data on waste generation including recyclables.

Knowing the type and quantity of wastes generated in HCF is a prerequisite for developing realistic waste management strategies. Through the GIF grant, Tdh Nepal embarked on creating an on-site, cost-effective methodology for the characterization and quantification of HCF waste in resource-limited settings.

The vision behind the innovation is that **realistic waste generation data will guide** development of an appropriate waste management system. The initiative will also **provide an example for further studies** on medical waste through insights into realistic planning and development of effective waste management practices based on evidenced based data. To prepare, the team i) secured approval from the Ministry of Health and Population (MoHP) and support from key stakeholders (Municipal Leaders, WHO, GIZ), ii) developed the Waste Study Implementation Manual, iii) assessed local entrepreneurs engaged in waste recycling/selling, iv) installed required facilities (waste segregation area, autoclave and disposal pit), v) trained HCF staff on data collection and autoclave use, and vi) procured dustbins, autoclavable bags, PPE and scales. Waste collection and weighing activities proceeded for 21 days in four HCF with a second round of data collection on recyclables for seven days.

By the end of Phase 3, the team aims to provide the following knowledge products to SWSC members and the global WASH in HCF community of practice:

- Waste study implementation manual (with tools, and SOPs including for autoclave)
- Waste pit and waste collection center designs
- Reporting Tools: data table, unit waste calculator, mobile data collection (Kobotoolbox, data analysis methods, etc.)

Tdh Nepal - learning to date in the face of challenges:

- Avoid transporting medical waste (to reduce health risks) via on-site data collection.
- The SWSC contracted technical consultant, Ute Pieper, insisted on a higher-quality, more costly autoclave than originally planned, which has created an opportunity to install and test such equipment as a case study for the Ministry of Health.
- A change in leadership at the Ministry of Health and population delayed informing the cognizant Technical Working Group; agreement to collaborate was eventually secured.
- Absence of dustbins in the local market required importing from a neighboring town.
- Plan around the busy schedules of HCF staff (due to COVID vaccination).

MALI : Piloting the RANAS holistic approach and social art for behavior change for source separation of medical waste in health facilities in Mali. The value propositions of this innovation for stakeholders include

- Hand hygiene and waste segregation behaviour change tools for the Malian national WASH in HCF Task Force
- Unprecedented model combining RANAS evidence-based tools and social art for behaviour change that is applicable to other WASH behaviours
- First-time, first-hand experience of piloting off-the-shelf RANAS tools
- Evidence for WASH advocacy



Since inception of the project Tdh Mali i) signed an agreement with the Malian Health Ministry to steer the project, ii) presented the initiative to the WASH Task Force and at the national WASH in HCF strategic planning workshop, iii) formalized technical support from RANAS LTD experts in collaboration with the SDC-sponsored Hands for Health research programme component for improved hand hygiene behaviour among HCF staff in Mali, and iv) partnered with the Centre Culturel Koré (CCK): local experts in social art for behaviour change. The following diagram represents the next steps in the innovation process:

Timeline of next steps 2022-2023

